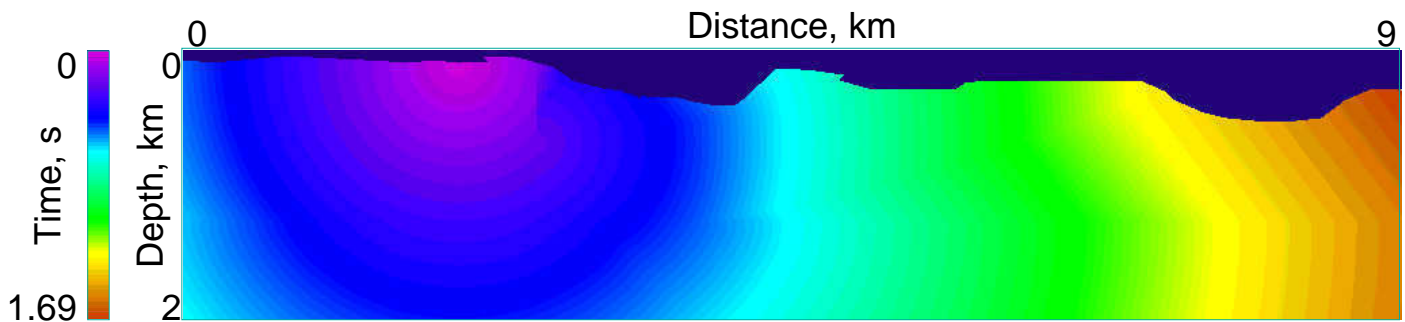
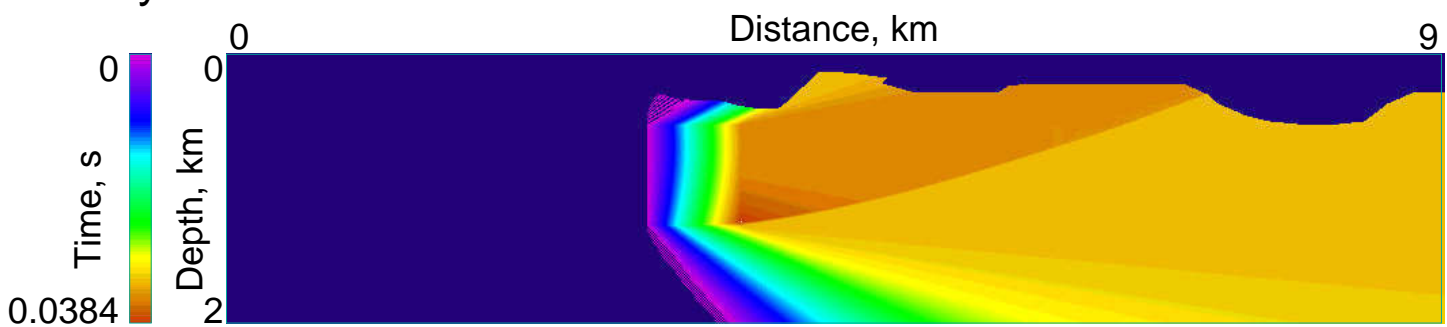


**Simple model velocity section** across Upheaval Dome. A 500 m wide salt diapir is optionally placed below the Dome structure.



**Refraction time image** showing propagation through the model with a salt diapir. The source is at the Upheaval Picnic Area (purple for very early times), and the section extends across Upheaval Dome to Horsethief Mesa (brown for very late times). While the velocity model is very simple, topographic variations are handled exactly.



**Cross-section showing the difference in refraction time** between a model with and without a salt uplift. Maximum time advance due to the modeled salt uplift (light brown) would be about 30 ms at the surface, and is fairly constant on the side of the structure away from the source. The amount of advance is controlled by the width of the salt uplift, while its distance of onset is controlled by the depth of the top of the uplift.