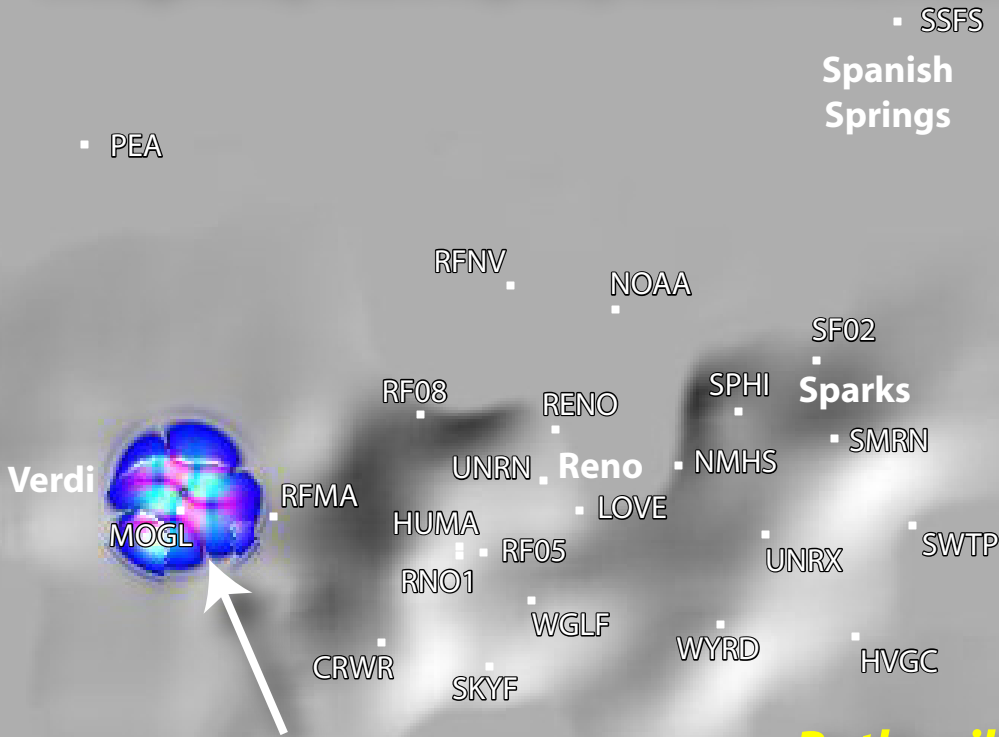


**Why did some parts of the city shake more than others on April 25, 2008, even though they were equally distant from the epicenter?**



**The Nevada Seismological Lab models the propagation of earthquake waves through the complex geology of the Truckee Meadows, to anticipate earthquake shaking.**

**Both soils and deep geologic basins will influence wave propagation, which we compute using computer clusters.**

10 miles

